



Homework Policy Statement

for Parents

Rationale, Definition, Guidelines

Introduction

At Ang Mo Kio Primary, we firmly believe partnership between parents and school is important for the holistic development of our children.

This homework policy provides an opportunity to strengthen our partnership with parents and forge greater link between the school and the home.

Rationale & Value of Homework

Homework contributes towards developing pupils to become life-long learners who have the confidence and are self-regulated and directed to work on their own. When carried out successfully, homework will help pupils' experience meaningful learning and attain the desired educational outcomes. Some of the value of homework to pupils includes:

- (a) **reinforcement of** learning and **deepen** understanding of lessons taught;
- (b) opportunity to **regularly practise**, and **apply skills and concepts taught**; and
- (c) developing good study skills and habits.

Definition of Homework

Homework is defined as work assigned to pupils, set to be completed outside the time-tabled curriculum. The work is done without the direct supervision by the teacher.

Usually the work is done at home. However, the work assigned may need to be completed in school when it requires special support or resource such as computing devices and technical equipment that are not commonly available at home.

Guidelines in setting of Homework

When setting homework, the following will be considered by the teachers:

- (a) Homework curriculum

Homework is meaningful, relevant to the core curriculum and necessary, as it helps to meet the learning outcomes of the pupils.

- (b) Types of homework

- Practice or review exercises - pupils review, revise and reinforce newly acquired knowledge (skills and content) to deepen understanding.
- Preparatory exercises – pupils prepare for future lessons or next level of learning through background reading and/or researching for information
- Extension exercises – pupils deepen and/or broaden their core knowledge. This may be through exploring the literature, experimental investigation or field study, reflecting on one's learning through writing etc. Purpose will be to maximise pupils learning for higher order learning outcomes.

- (c) Learning Support

To allow for greater scaffolding for pupils who need much support in their learning. Teacher will provide sufficient scaffolds such as exemplars/examples that pupils can make reference to, to complete the work **independently** at home.

Estimated Time for Homework

To prevent pupils from being overloaded with homework, the school has worked out the estimated time for completion of homework tasks (***please refer to summary table below***). Actual time required to complete assignments will vary with each pupils' study habits, academic skills and overall school load. These planning arrangements may also vary across the academic year especially in the run-up to the examinations.

Homework will not be given over festive periods such as Chinese New Year, Good Friday, Hari Raya Puasa, Hari Raya Haji and Deepavali. An examination/a spelling activity will not be conducted on the school day after the festive period.

Summary Table

Level	Weekdays (school term) Estimated duration (per day)	Per Week (Mon to Fri) Max time taken	Weekend Status	Vacation (including March, June, Sept)
P1&2	30 min to 1 hour (all three core subjects)	5 hours per week	No Homework	<ul style="list-style-type: none">• <u>At least half</u> of the entire holidays will be protected• Homework given during the holidays is <u>less than</u> the load given per day during school term.• Homework includes the Home-Based Learning through Mconline• Festive holidays: NO HOMEWORK
P3&4	1.5 hours to 2 hours (all 4 core subjects)	Max 10 hours per week	Less than the no. of hours per weekday	
P5&6	2 hours to 2.5 hours (all 4 core subjects)	Max 12.5 hours per week		

Role of Parents

Parents play an important part in children's education. Parents can consider doing the following to support their children in their learning.

- create a home environment conducive for studying and completion of homework;
- supervise and provide support for child's learning;
- avoid overloading their children with additional work arising from enrichment
- reinforce good study habits and attitudes;
- be mindful of the stresses arising from school homework and out-of-school activities, and help their children prioritise their time among these activities;
- work in partnership with teachers to support child's learning and development; and

- (g) check their child's diary/handbook to view the daily homework assignments

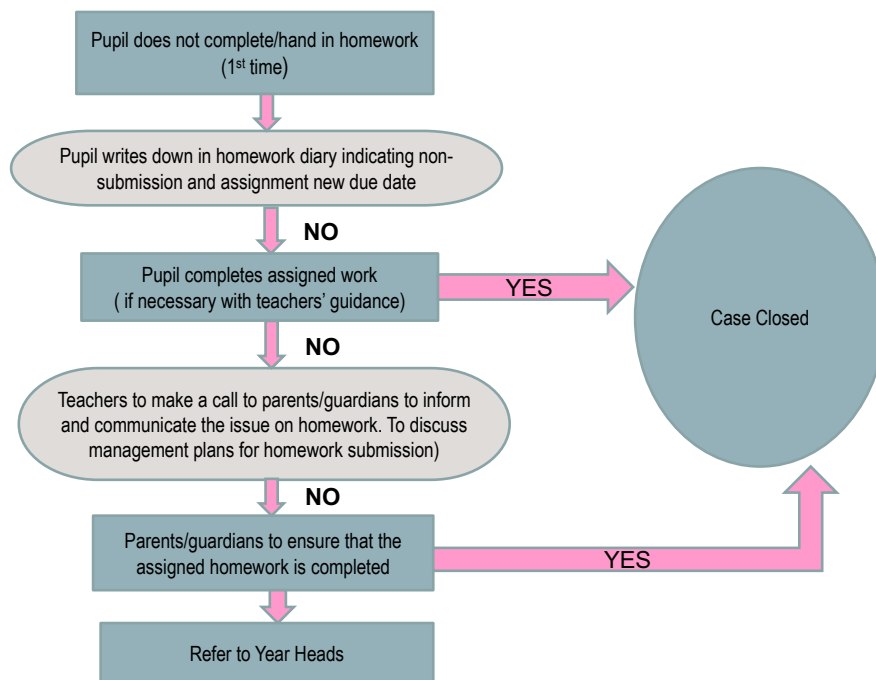
Role of Pupils

In order to benefit optimally from homework, pupils should do the following on a daily basis:

- (a) participate actively during class instruction for effective learning;
- (b) understand the purpose of homework and what is expected of them;
- (c) keep track of homework instructions and deadlines;
- (d) manage time well to ensure that homework is completed and submitted on time;
- (e) give his/her best effort in completing homework;
- (f) review feedback from teachers on homework submitted; and
- (g) check the whiteboard in class and record homework in their diary/handbook daily.

Non-compliance/Tardiness in Homework

The school believes in the value of homework in developing pupils to be life-long learners. We take a serious stand on non-completion of homework without **valid reasons**¹ and will take appropriate measures, as reflected in the flowchart below.



Conclusion:

Homework is an integral part of learning. We look forward to your support and partnership in the successful implementation of the policy.

¹ Valid reasons include, medical, representing school for performances and competitions, learning trips and personal matters. Teachers ought to give pupils the appropriate grace time for completion of their homework. For long absenteeism, other alternatives such as online work can be carried out.